

NOVEMBER 10, 2020

Update on COVID-19 Spending in California

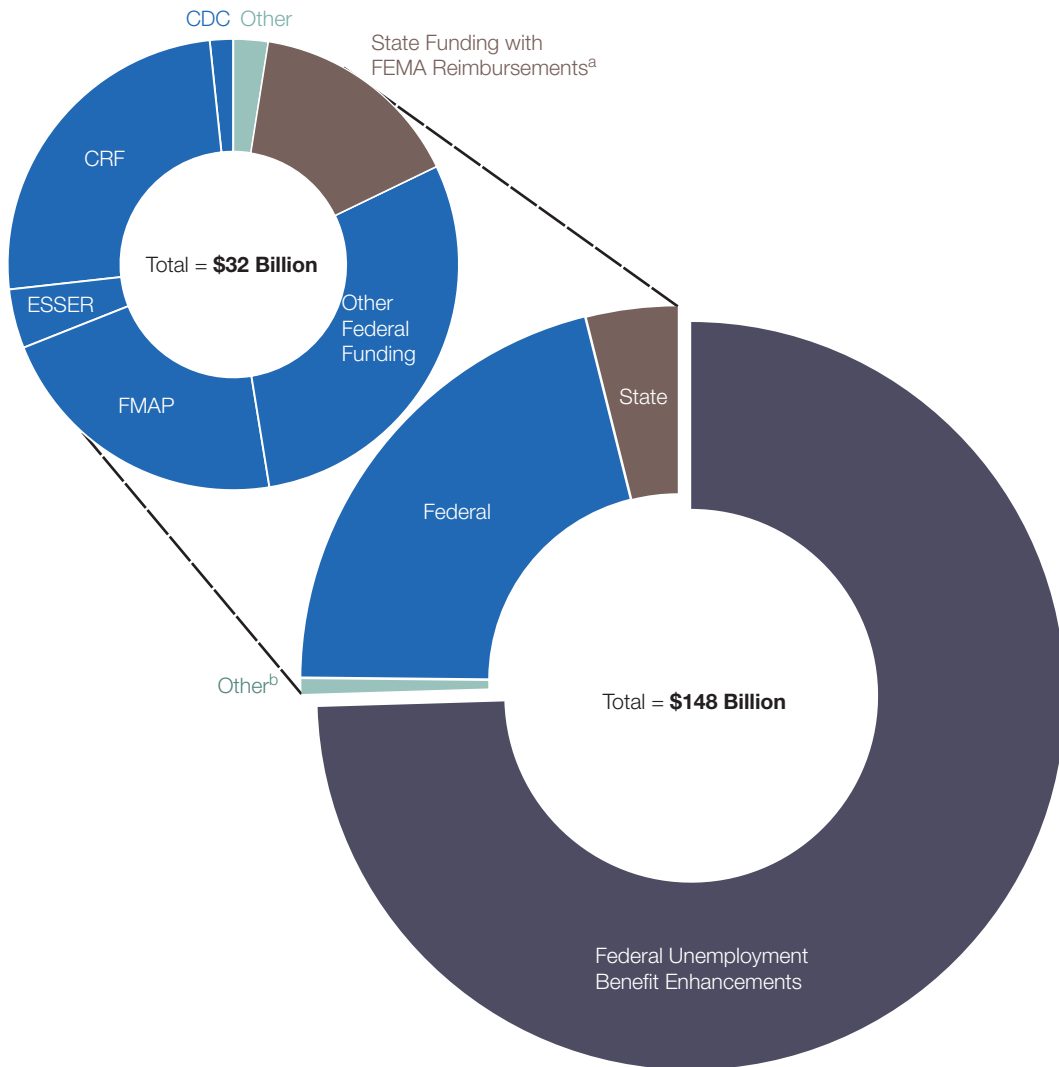
PRESENTED TO:

Assembly Budget Subcommittee No. 6 on
Budget Process Oversight and Program Evaluation
Hon. Philip Y. Ting, Chair
and
Assembly Committee on Governmental Organization
Hon. Adam C. Gray, Chair



LEGISLATIVE ANALYST'S OFFICE

Funding Sources for COVID-19-Related Spending by the State



^a State funding is almost entirely General Fund, with an additional 75 percent reimbursement from FEMA expected for most cost categories.

^b Other primarily includes state costs that will eventually be covered by private sources, for example, private health insurers.

COVID-19 = coronavirus disease 2019; FEMA = Federal Emergency Management Agency; FMAP = Federal Medical Assistance Percentage; ESSER = Elementary and Secondary School Emergency Relief Fund; CRF = Coronavirus Relief Fund; and CDC = Centers for Disease Control and Prevention.

LAO



COVID-19 Spending by Type

How California Is Spending COVID-19-Related Funding \$32 Billion in 2019-20 and 2020-21

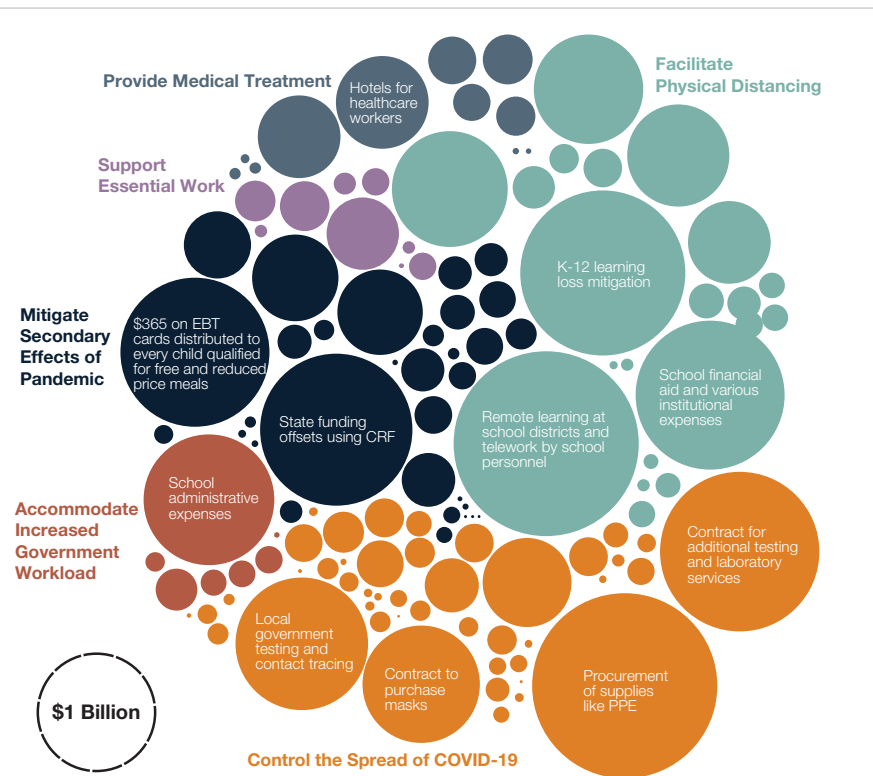
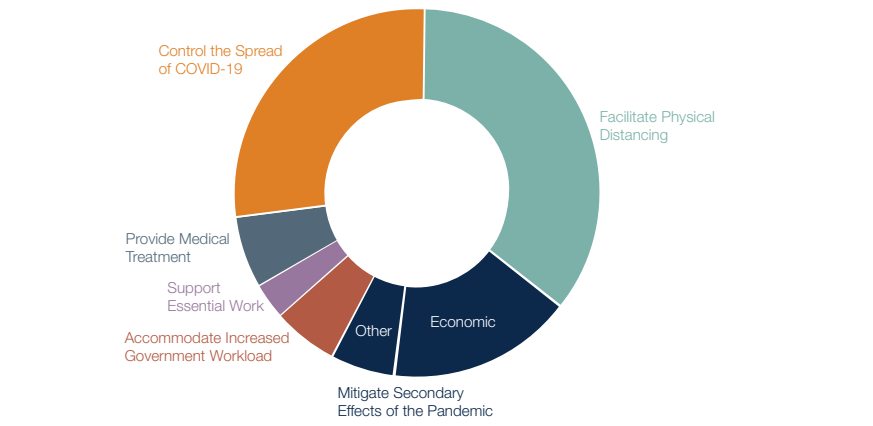


Figure excludes federal enhanced benefits for unemployment insurance (which total an estimated \$110 billion).
 COVID-19 = coronavirus disease 2019; PPE = personal protective equipment; CRF = Coronavirus Relief Fund; and EBT = Electronic Benefit Transfer.

LAO



COVID-19 Spending by Program Area

